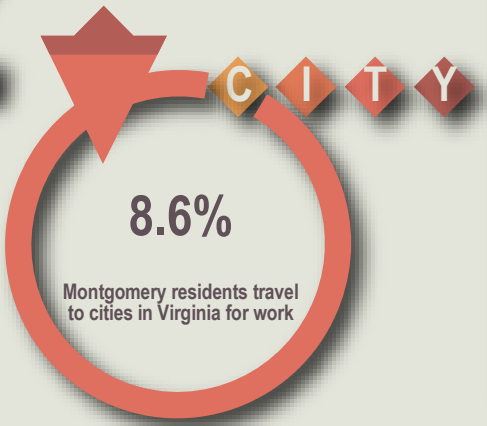
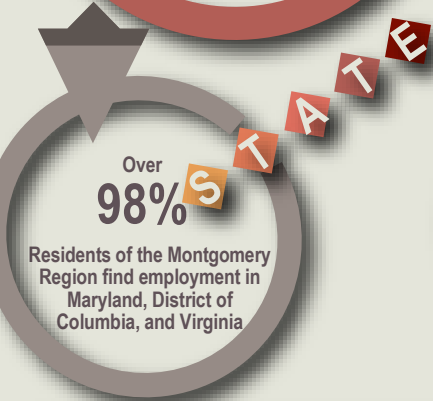
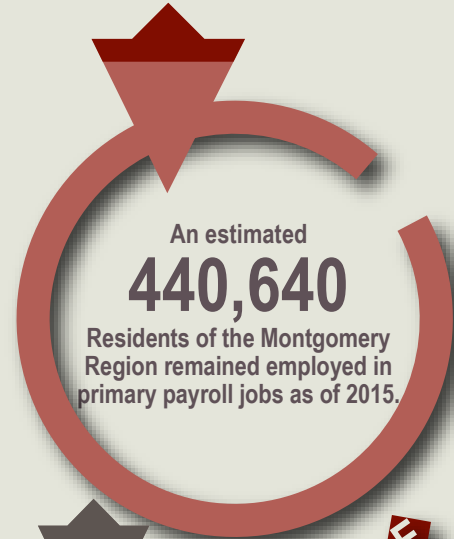
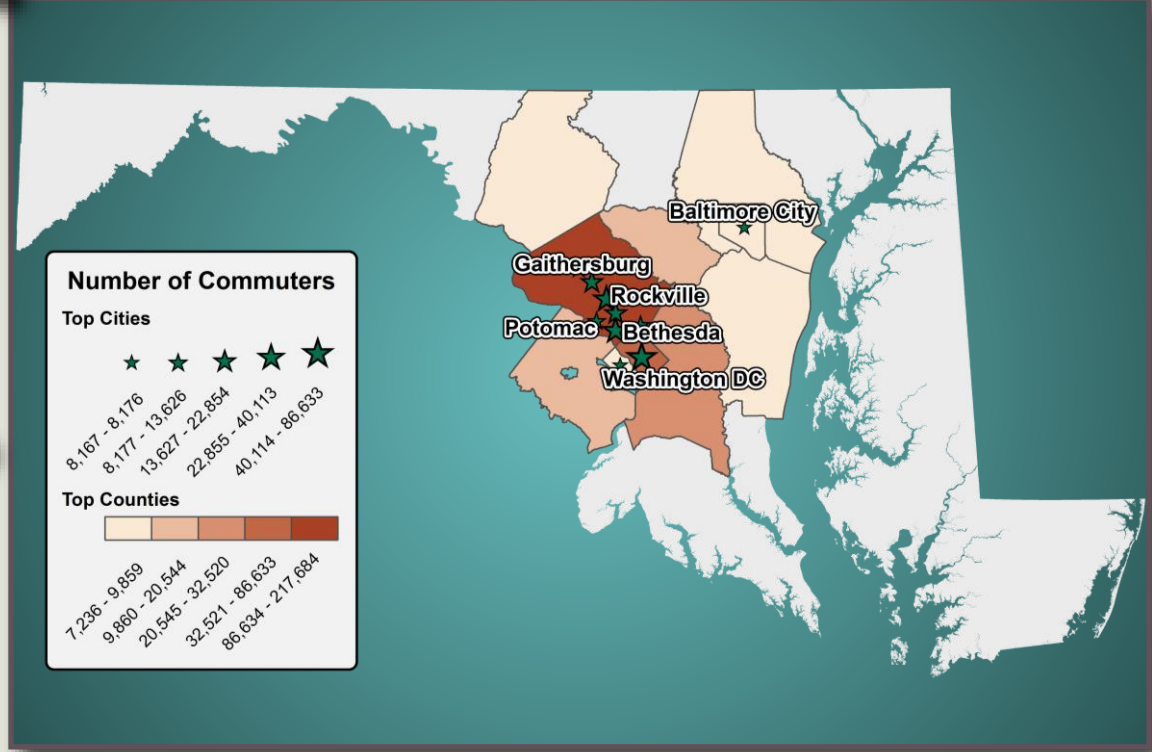


Commuting Patterns: Montgomery Workforce Region



People Living in Montgomery Region Work



Source: U.S. Census Bureau, Center for Economic Studies, OnTheMap (2015); Note: Based on primary job counts

Cities Montgomery Residents are Employed

Washington, DC	86,633	19.7%
Rockville	40,113	9.1%
Bethesda	32,567	7.4%
North Bethesda	22,854	5.2%
Gaithersburg	22,051	5.0%

Counties Montgomery Residents are Employed

Montgomery	217,684	49.4%
District of Columbia	86,633	19.7%
Prince George's	32,520	7.4%
Fairfax, VA	20,544	4.7%
Howard	13,924	3.2%

States Montgomery Residents are Employed

Maryland	306,330	69.5%
District of Columbia	86,633	19.7%
Virginia	40,311	9.1%
Pennsylvania	1,557	0.4%
New York	1,554	0.4%

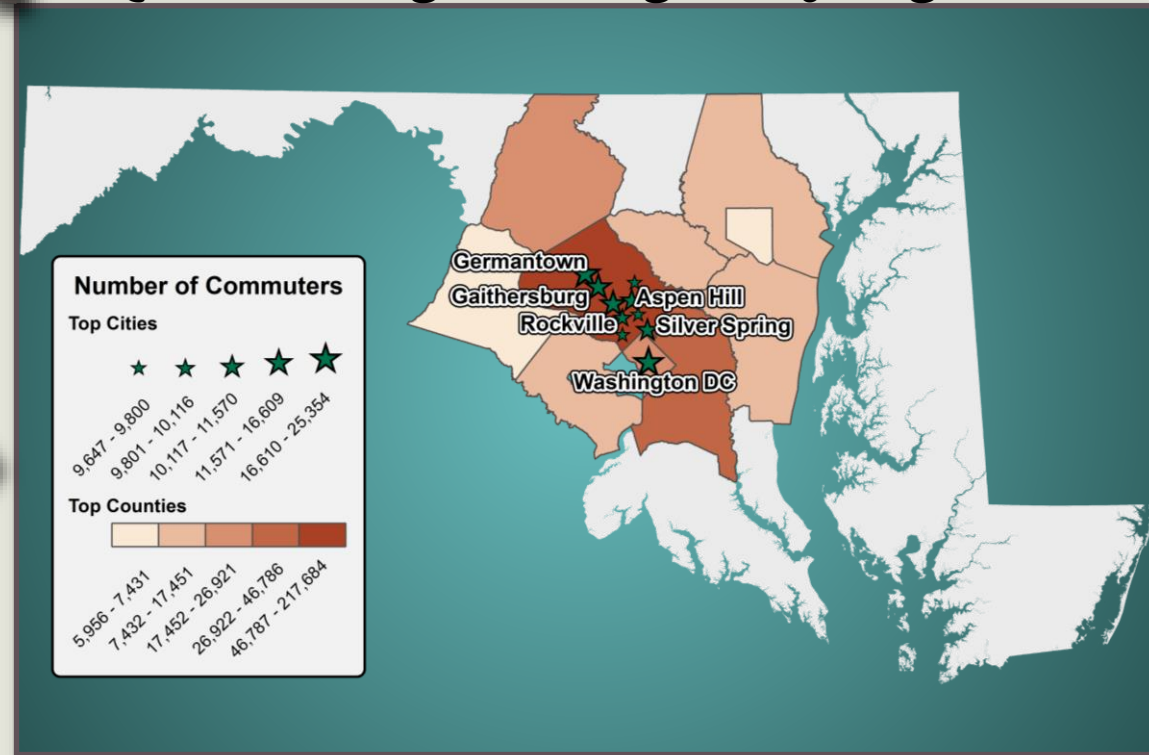
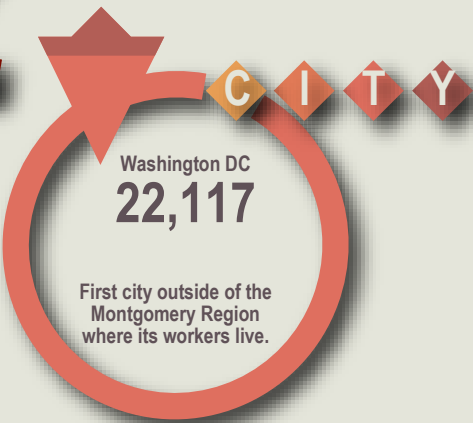
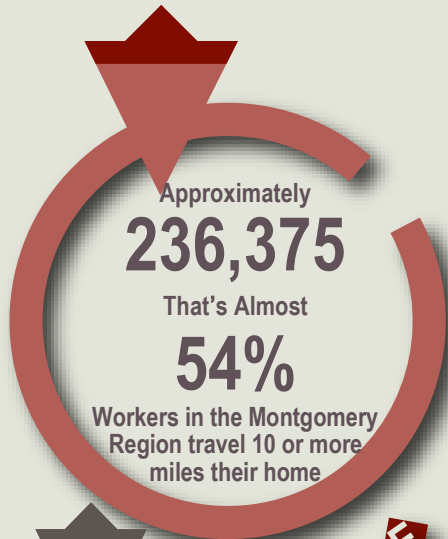
Commuting Patterns: Montgomery Workforce Region



Office of Workforce Information and Performance
 Division of Workforce Development and Adult Learning ♦ Department of Labor, Licensing and Regulation



People Working in Montgomery Region Live



Source: U.S. Census Bureau, Center for Economic Studies, OnTheMap (2015); Note: Based on primary job counts

Cities Workers in Montgomery Live

Germantown	25,354	5.8%
Washington DC	22,117	5.0%
Gaithersburg	16,609	3.8%
Rockville	15,032	3.4%
Silver Spring	11,570	2.6%

Counties Workers in Montgomery Live

Montgomery	217,684	49.5%
Prince George's	46,786	10.6%
Frederick	26,921	6.1%
District of Columbia	22,117	5.0%
Fairfax Co., VA	17,451	4.0%

States Workers in Montgomery Live

Maryland	366,200	83.2%
Virginia	37,766	8.6%
District of Columbia	22,117	5.0%
Pennsylvania	4,956	1.1%
West Virginia	3,656	0.8%