

Somerset County Fact Sheet

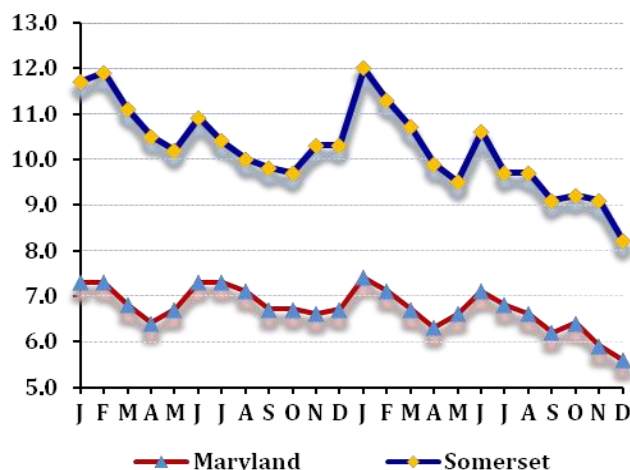
LABOR FORCE STATUS 2012-2013*

Annual Averages

	2012	2013	Change
Labor Force	10,764	10,661	-103
Employment	9,629	9,605	-24
Unemployment	1,135	1,056	-79
Unemployment Rate	10.5	9.9	-0.6
Maryland Rate	6.9	6.6	-0.3

--Not Seasonally Adjusted

UNEMPLOYMENT TRENDS - Jan. 2012-Dec. 2013*



EMPLOYMENT BY SECTOR - 2013 ANNUAL*

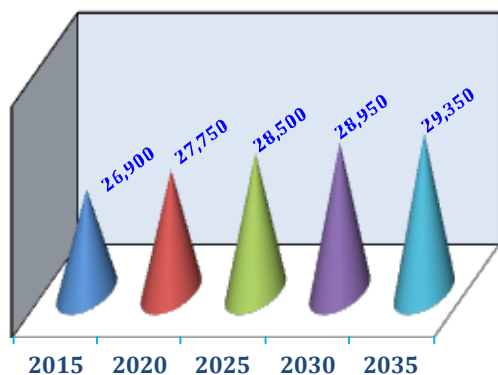
Sector	Employment
Total Employment	6,615
Government Total	3,018
Federal	45
State	2,047
Local	926
Private Sector Total	3,597
Natural Resources & Mining	205
Construction	243
Manufacturing	179
Trade, Transportation, & Utilities	1,025
Information	23
Financial Activities	178
Professional & Business Services	235
Education & Health Services	1,069
Leisure & Hospitality	367
Other Services/Unclassified	73

PRIVATE SECTOR GROWTH - Jan. 2012-Dec. 2013*

Industry	Growth
Professional and technical services	46
Food and beverage stores	29
Ambulatory health care services	19
Truck transportation	11
Real estate	10
Social assistance	9
Merchant wholesalers, durable goods	7
Administrative and support services	7
Construction of buildings	5
Sporting goods, hobby, book and music stores	4

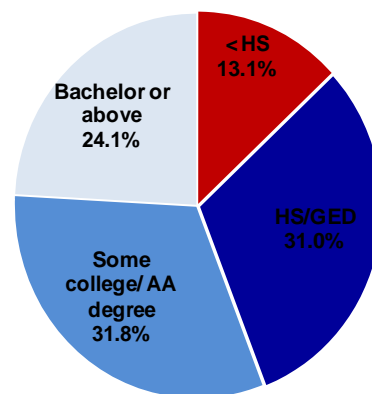
POPULATION: 2010 CENSUS & PROJECTIONS ***

2013 Estimate - 26,273



WORKFORCE BY EDUCATION LEVEL - 2013Q2**

Workers age 25 & older



Sources: *Maryland Department of Labor, Licensing and Regulation **U.S. Census Bureau *** Maryland State Data Center

Division of Workforce Development and Adult Learning, Office of Workforce Information and Performance, August 2014
1100 N. Eutaw St., Rm 316 Baltimore, MD 21201 dlwdallmi_dllr@maryland.gov
www.dllr.maryland.gov/lmi