

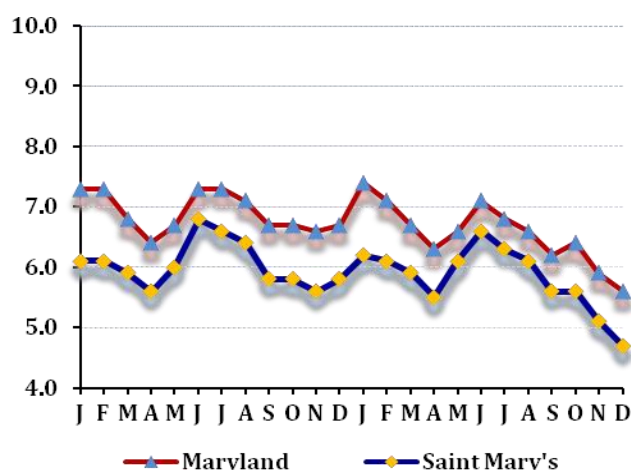
## LABOR FORCE STATUS 2012-2013\*

### Annual Averages

	2012	2013	Change
Labor Force	56,286	56,316	30
Employment	52,874	53,030	156
Unemployment	3,412	3,286	-126
Unemployment Rate	6.1	5.8	-0.3
Maryland Rate	6.9	6.6	-0.3

--Not Seasonally Adjusted

## UNEMPLOYMENT TRENDS - Jan. 2012-Dec. 2013\*



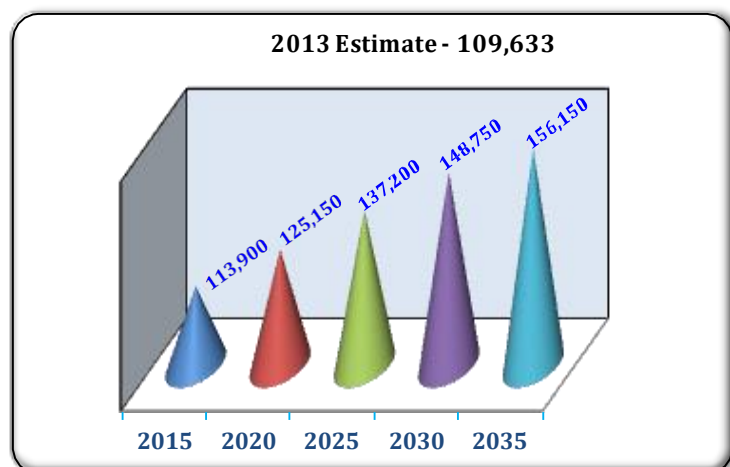
## EMPLOYMENT BY SECTOR - 2013 ANNUAL\*

Sector	Employment
Total Employment	42,535
Government Total	13,718
Federal	8980
State	936
Local	3,802
Private Sector Total	28,817
Natural Resources & Mining	64
Construction	1,660
Manufacturing	471
Trade, Transportation, & Utilities	6,668
Information	236
Financial Activities	760
Professional & Business Services	10,249
Education & Health Services	4,242
Leisure & Hospitality	3,474
Other Services/Unclassified	993

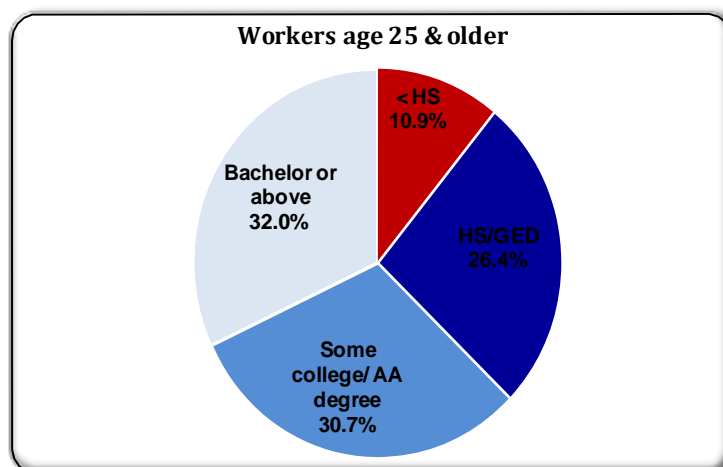
## PRIVATE SECTOR GROWTH - Jan. 2012-Dec. 2013\*

Industry	Growth
Professional and technical services	147
Specialty trade contractors	143
Food and beverage stores	86
Food services and drinking places	75
Ambulatory health care services	49
Motor vehicle and parts dealers	37
Management of companies and enterprises	34
Personal and laundry services	27
Building material and garden supply stores	21
Educational services	16

## POPULATION: 2010 CENSUS & PROJECTIONS \*\*\*



## WORKFORCE BY EDUCATION LEVEL - 2013Q2\*\*



Sources: \*Maryland Department of Labor, Licensing and Regulation    \*\*U.S. Census Bureau    \*\*\* Maryland State Data Center