



Maryland Areas of Substantial Unemployment (ASU's)

PY 2015

**Division of Workforce Development and Adult
Learning**

Office of Workforce Information and Performance

Carolyn J. Mitchell, Director

Date: April 23, 2015

Maryland Areas of Substantial Unemployment

PY 2015

TABLE OF CONTENTS

1.0	General Information about ASU's.....	3
1.1	ASU Designation Process.....	3
1.2	ASU Qualification Requirements...	3
2.0	Developing ASU's.....	3
2.1	Data Sources Used.....	3
3.0	Maryland WIA ASUs.....	4
4.0	PY 2015 WIA ASUs Chart.....	5
4.1	Federal ASU Data for PY 2015.....	5
5.0	Anne Arundel County WIA.....	6
6.0	Baltimore City WIA.....	7
7.0	Baltimore County WIA.....	8
8.0	Frederick County WIA.....	9
9.0	Lower Shore WIA.....	10
10.0	Mid-Maryland WIA.....	11
11.0	Montgomery County WIA.....	12
12.0	Prince Georges County WIA.....	13
13.0	Southern Maryland WIA.....	14
14.0	Susquehanna WIA.....	15
15.0	Upper Shore WIA.....	16
16.0	Western Maryland WIA.....	17

1.0 GENERAL INFORMATION ABOUT ASU'S

Areas of substantial unemployment (ASU's) are important factors in the distribution of selected WIA title 1 funds (chapters 4-5). The ASU designation process occurs annually and is done under the direction and guidance of the Bureau of Labor Statistics (BLS) and the Employment and Training Administration (ETA). *We received confirmation from BLS our Federal ASU has been validated and submitted to ETA.*

1.1 ASU Designation Process

An ASU is an area that is composed of any combination of Local Area Unemployment Statistics (LAUS) areas and/or census-shared areas that meet the qualification requirements set by ETA. An ASU part is (1) a LAUS area, (2) a county or portion of a county, (3) portion of a LAUS area that is census-shared from a whole LAUS area.

1.2 ASU Qualification Requirements

- 1) **Population** of at least 10,000 persons based on Census Bureau figures
- 2) **Unemployment Rate** must be 6.5 % or greater for the 12-month average for the reference period (July 2013 benchmarked – June 2014)
- 3) **A geographic area** comprised of contiguous census tracts

2.0 DEVELOPING ASU'S

Federal ASU's are constrained by the state boundaries and can be a LAUS area (i.e. statewide, county, city, part of city, part of county) in its entirety as long as the ASU qualification requirements are met. All ASU's were identified by using the approved census-share method. This method is used to designate part of a LAUS area as either an ASU part or a whole ASU. Labor force estimates for the census-shared areas are developed by applying census-share ratios to the current employment and unemployment estimates for the larger LAUS areas from which they are derived. The Federal ASU's are used nationally to determine Maryland's share of the total available federal dollars.

State ASU's are constructed in the same manner as the Federal ASU's however they are constrained by the WIA boundaries. The State ASU's are used to allocate Maryland's share of available federal dollars among the WIA's.

2.1 Data Sources Used

- 1) **2010 Census Data** - Beginning with PY 2014, the Census 2010 household-only employment and unemployment data were used in the methodology. The Employment and Training Administration (ETA) contracted with the Census Bureau for a special tabulation of household-only data that excluded persons living in group quarters. This eliminated the impact of the "Group Quarters" error.
 - a. **Census tracts reflect population changes since the 2000 Census.** Most counties have more total census tracts than the 2000 census. Some census tract designation numbers common to both Census editions often have re-defined boundaries.
- 2) **Local Area Unemployment Statistics Program (LAUS) Data** – The 12 month average employment and unemployment figures for the reference period July 2013 (benchmark) – June 2014 are used in the PY 2015 ASU designations.

3.0 MARYLAND ASUs

Below are the State ASU's for PY 2015:

Anne Arundel County WIA: This WIA includes 1 ASU consisting of 73 census tracts in Anne Arundel County..

Baltimore City WIA: This WIA includes 1 ASU consisting of 200 census tracts in Baltimore City.

Baltimore County WIA: This WIA includes 1 ASU consisting of 197 census tracts in Baltimore County.

Frederick County WIA: This WIA includes 1 ASU consisting of 47 census tracts in Frederick County.

Lower Shore WIA: This WIA includes 1 ASU consisting of 44 census tracts in Somerset County, Wicomico County, and Worcester County.

Mid- Maryland WIA: This WIA includes 2 ASUs containing 64 census tracts in Carroll County and Howard County.

Montgomery County WIA: This WIA includes 1 ASU consisting of 94 census tracts in Montgomery County.

Prince George's WIA: This WIA includes 1 ASU consisting of 214 census tracts in Prince George's County.

Southern Maryland WIA: This WIA includes 1 ASU consisting of 51 census tracts in Calvert County, Charles County and St. Mary's County.

Susquehanna WIA: This WIA includes 1 ASU consisting of 68 census tracts in Cecil County and Harford County.

Upper Shore WIA: This WIA includes 1 ASU consisting of 50 census tracts in Caroline County, Dorchester County, Kent County, Queen Anne's County, and Talbot County.

Western Maryland WIA: This WIA includes 1 ASU consisting of 62 census tracts in Allegany County, Garrett County, and Washington County.

4.0 PY 2015 ASU WIA Chart

Maryland State ASU Data for PY 2015

	Labor Force	Employment	Unemployment	Unemployment Rate	
Anne Arundel County WIA (1 ASU, 73 Tracts)	Total	216,751	202,745	14,006	6.5
Baltimore City WIA (1 ASU, 200 Tracts)	Total	275,888	251,286	24,602	8.9
Baltimore County WIA (1 ASU, 197 Tracts)	Total	425,016	397,398	27,618	6.5
Frederick County WIA (1 ASU, 47 Tracts)	Total	101,968	95,318	6,650	6.5
Lower Shore WIA (1 ASU, 44 Tracts)	Total	91,242	83,315	7,927	8.7
Somerset County (8 Tracts)		10,522	9,569	953	9.1
Wicomico County (19 Tracts)		52,310	48,329	3,981	7.6
Worcester County (17 Tracts)		28,411	25,418	2,993	10.5
Mid-Maryland WIA (2 ASUs, 64 Tracts)	Total	189,599	177,270	12,330	6.5
Carroll County (34 Tracts)		87,798	82,065	5,734	6.5
Howard County (30 Tracts)		101,801	95,205	6,596	6.5
Montgomery County WIA (1 ASU, 94 Tracts)	Total	249,796	233,574	16,223	6.5
Prince George's County WIA (1 ASU, 214 Tracts)	Total	462,660	432,805	29,855	6.5
Southern Maryland WIA (1 ASU, 51 Tracts)	Total	143,397	134,064	9,333	6.5
Calvert County (15 Tracts)		43,539	40,904	2,636	6.1
Charles County (22 Tracts)		61,201	57,016	4,185	6.8
St. Mary's County (14 Tracts)		38,656	36,144	2,512	6.5
Susquehanna WIA (1 ASU, 68 Tracts)	Total	173,543	162,260	11,283	6.5
Cecil County (19 Tracts)		50,985	47,511	3,474	6.8
Harford County (49 Tracts)		122,557	114,749	7,809	6.4
Upper Shore WIA (1 ASU, 50 Tracts)	Total	89,939	83,909	6,030	6.7
Caroline County (9 Tracts)		16,801	15,628	1,173	7.0
Dorchester County (10 Tracts)		16,191	14,755	1,436	8.9
Kent County (6 Tracts)		10,821	10,022	800	7.4
Queen Anne's County (14 Tracts)		27,586	26,105	1,481	5.4
Talbot County (11 Tracts)		18,541	17,399	1,142	6.2
Western Maryland WIA (1 ASU, 62 Tracts)	Total	122,944	114,072	8,872	7.2
Allegany County (23 Tracts)		35,854	33,263	2,591	7.2
Garrett County (7 Tracts)		16,863	15,758	1,105	6.6
Washington County (32 Tracts)		70,227	65,052	5,175	7.4

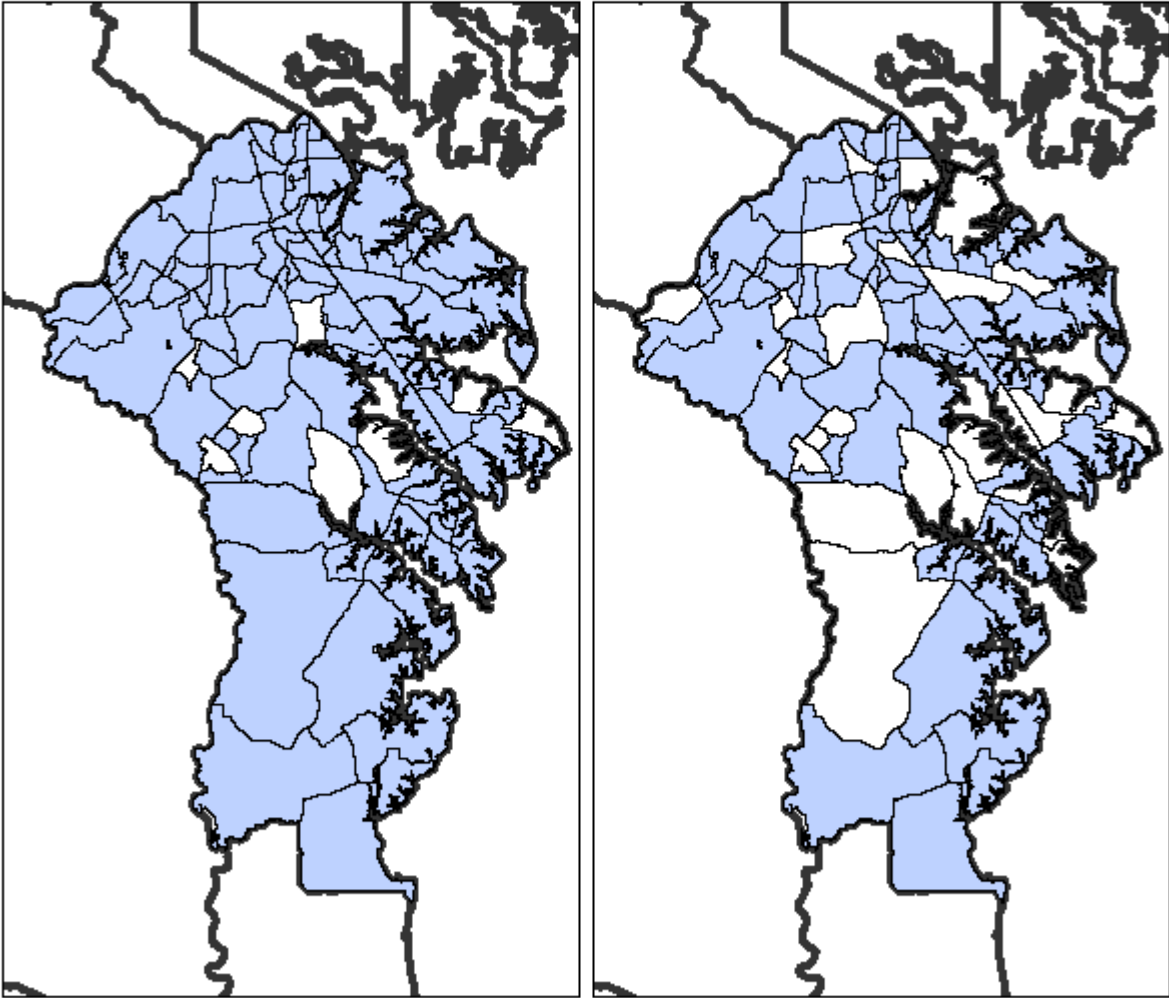
4.1 PY15 2015 Federal ASU Data

	Labor Force	Employment	Unemployment	Unemployment Rate	
Maryland State	Total	2,842,708	2,658,961	183,747	6.5%

Anne Arundel WIA

PY 2014
96 Tracts

PY 2015
73 Tracts

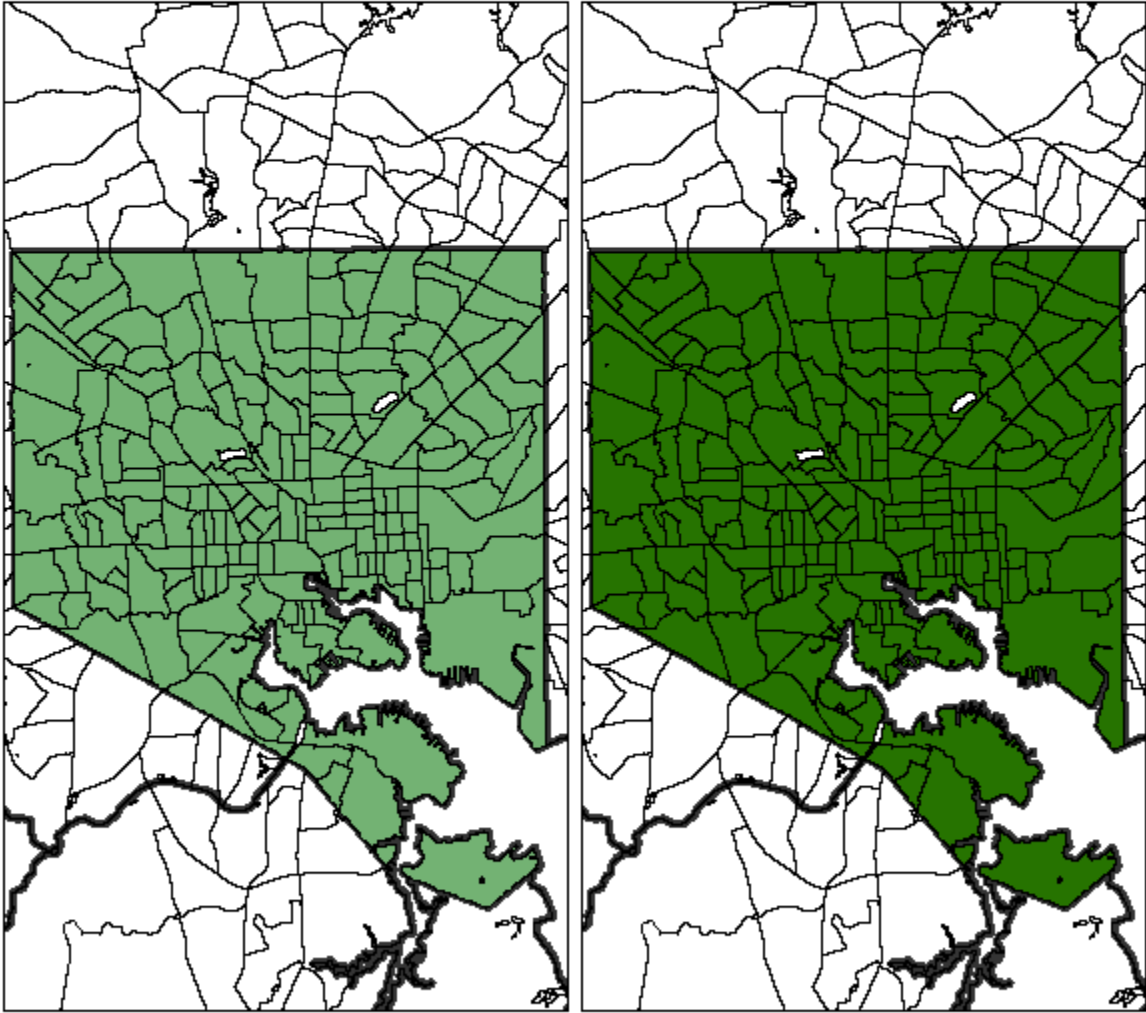


Maryland Department of Labor, Licensing & Regulation - Office of Workforce Information and Performance

Baltimore City WIA

**PY 2014
200 Tracts (All In)**

**PY 2015
200 Tracts (All In)**

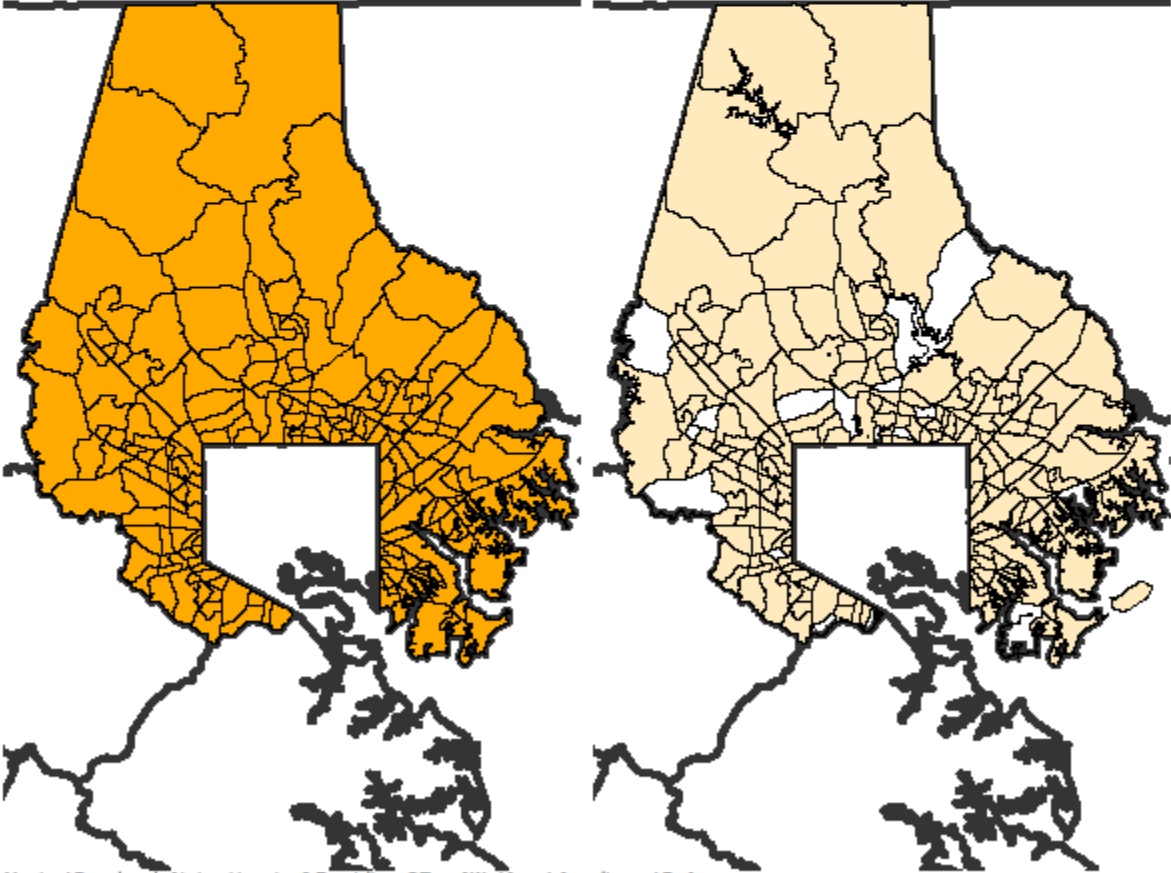


Maryland Department of Labor, Licensing & Regulation - Office of Workforce Information and Performance

Baltimore County WIA

PY 2014
214 Tracts (All In)

PY 2015
197 Tracts

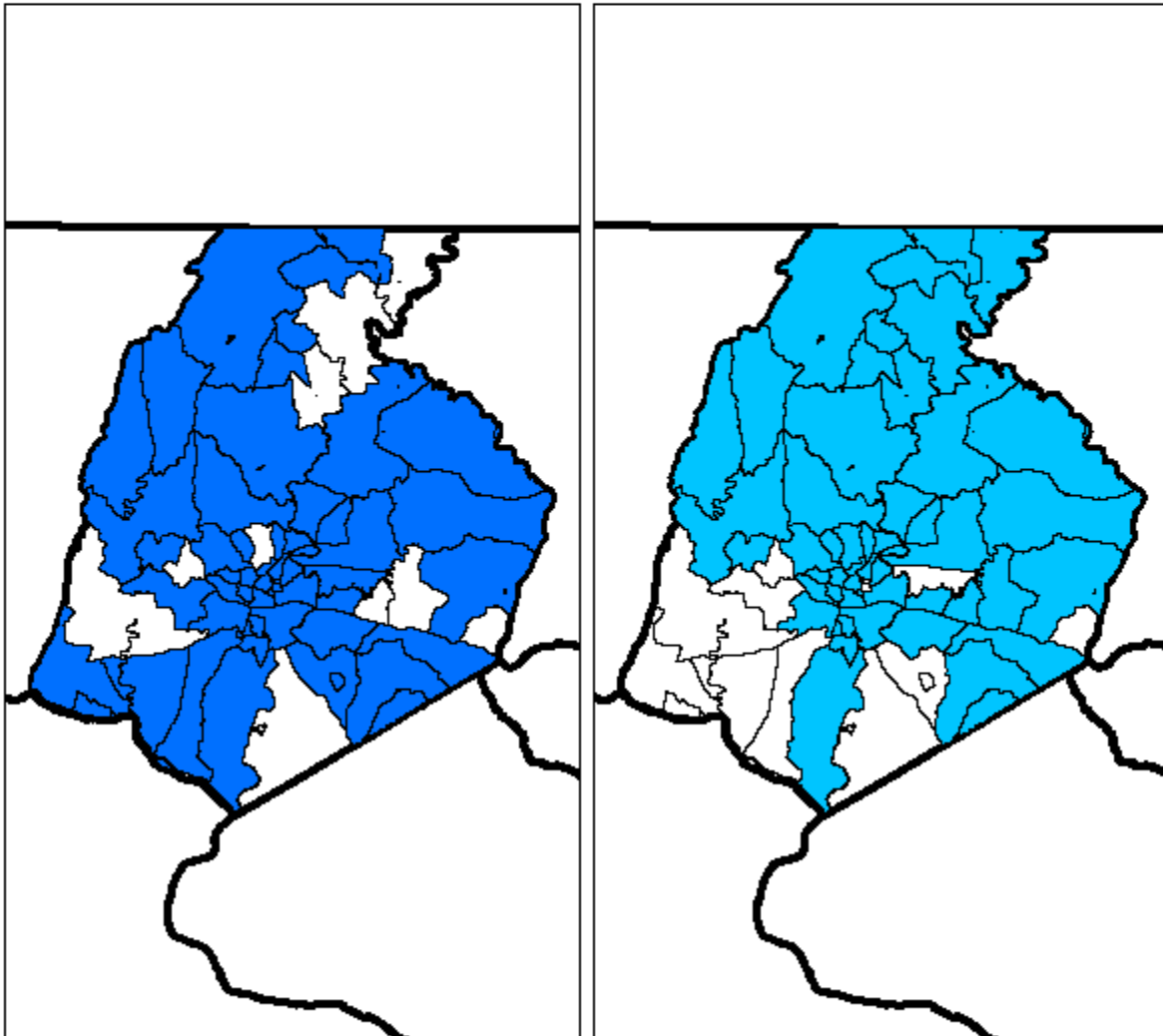


Maryland Department of Labor, Licensing & Regulation - Office of Workforce Information and Performance

Frederick WIA

PY 2014
51 Tracts

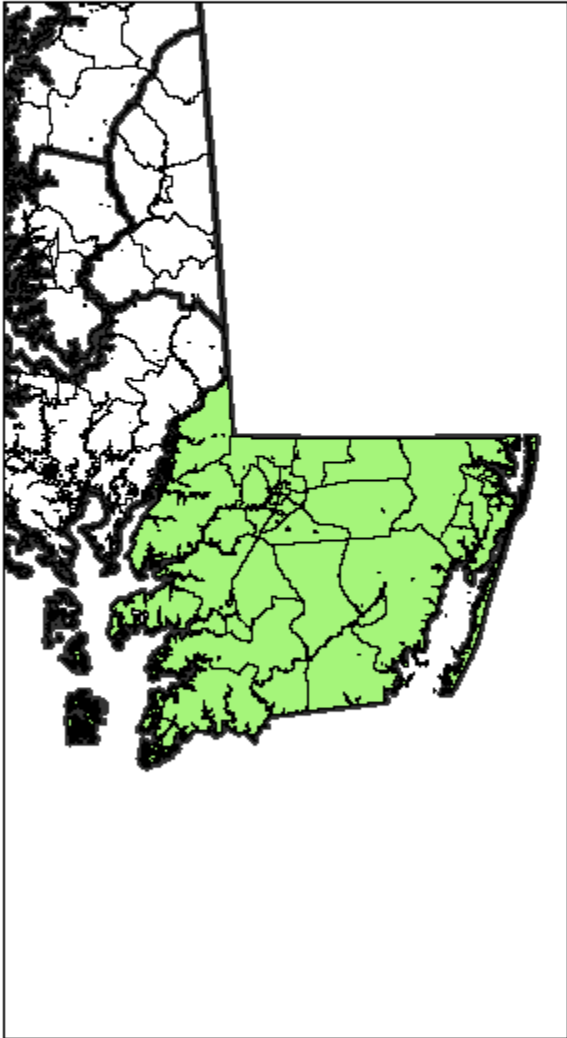
PY 2015
47 Tracts



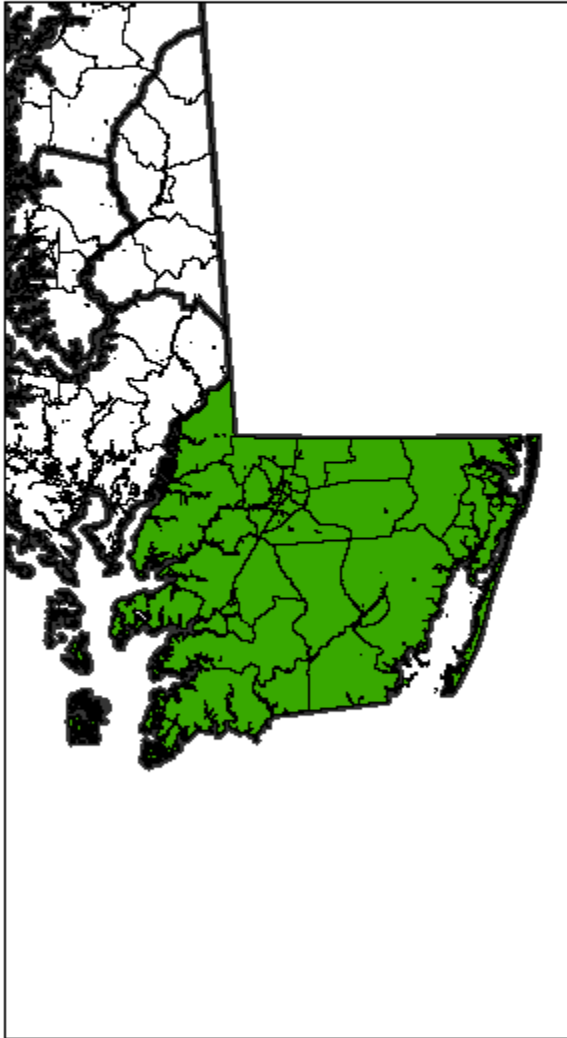
Maryland Department of Labor, Licensing & Regulation - Office of Workforce Information and Performance

Lower Shore WIA

PY 2014
44 Tracts (All In)



PY 2015
44 Tracts (All In)

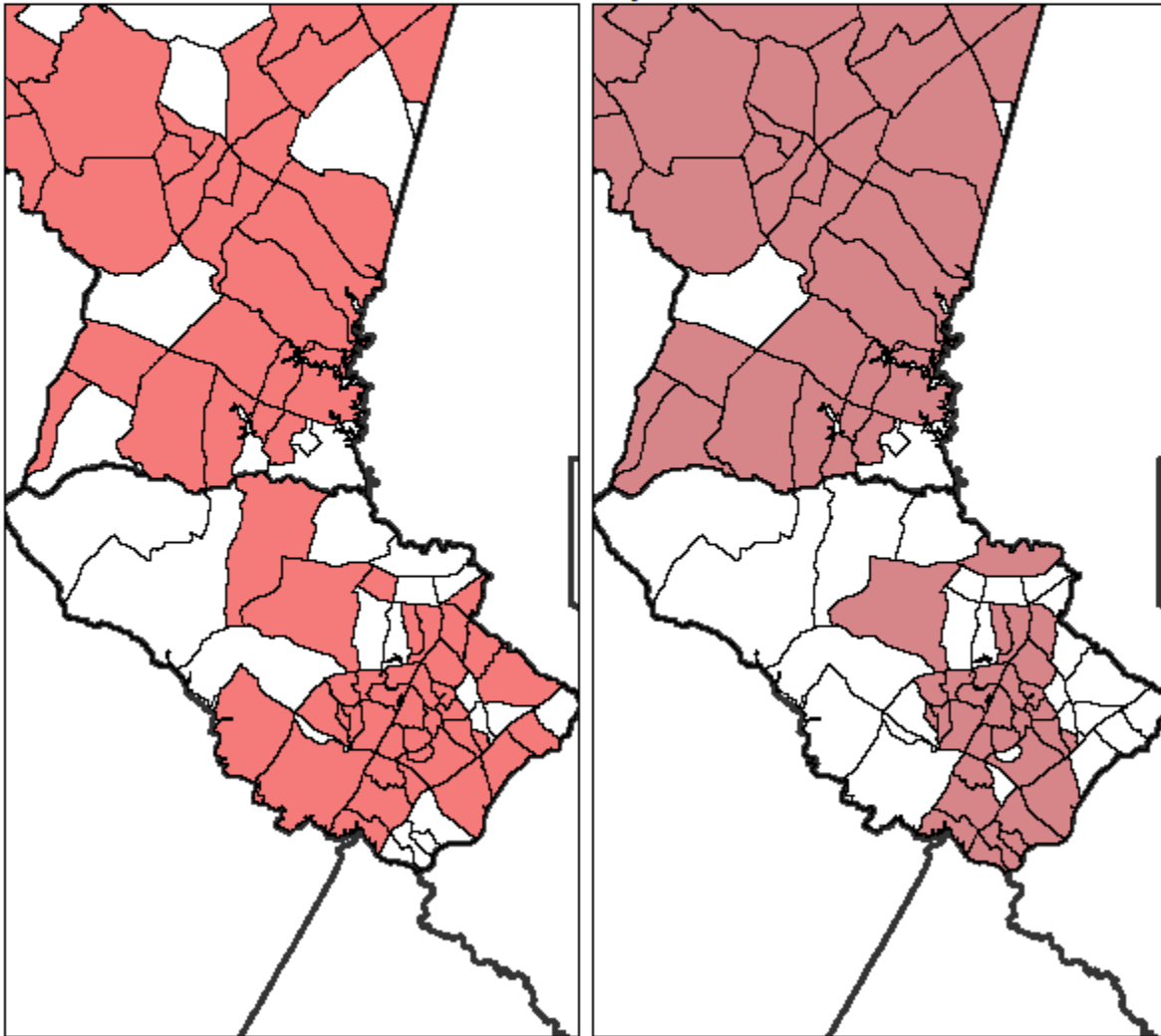


Maryland Department of Labor, Licensing & Regulation - Office of Workforce Information and Performance

Mid Maryland WIA

PY 2014
65 Tracts

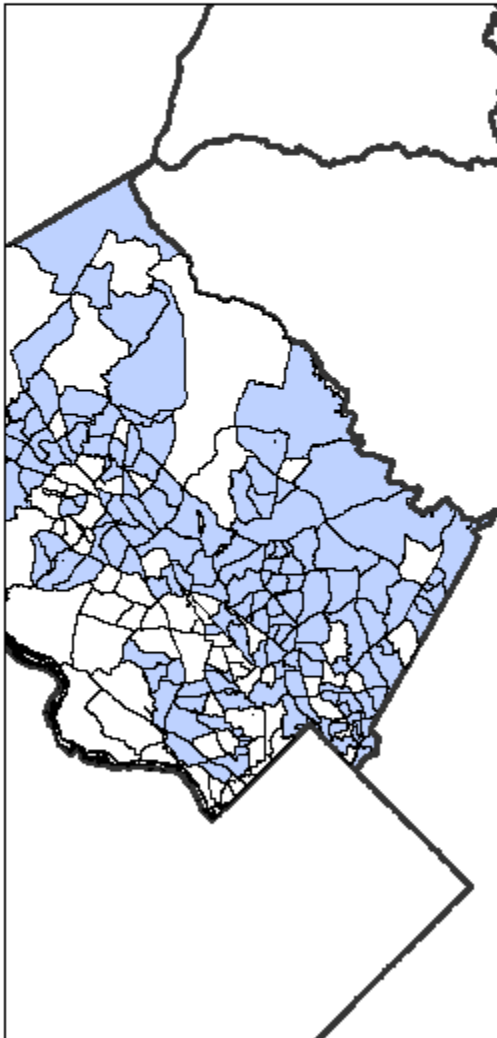
PY 2015
2 ASUs
64 Tracts



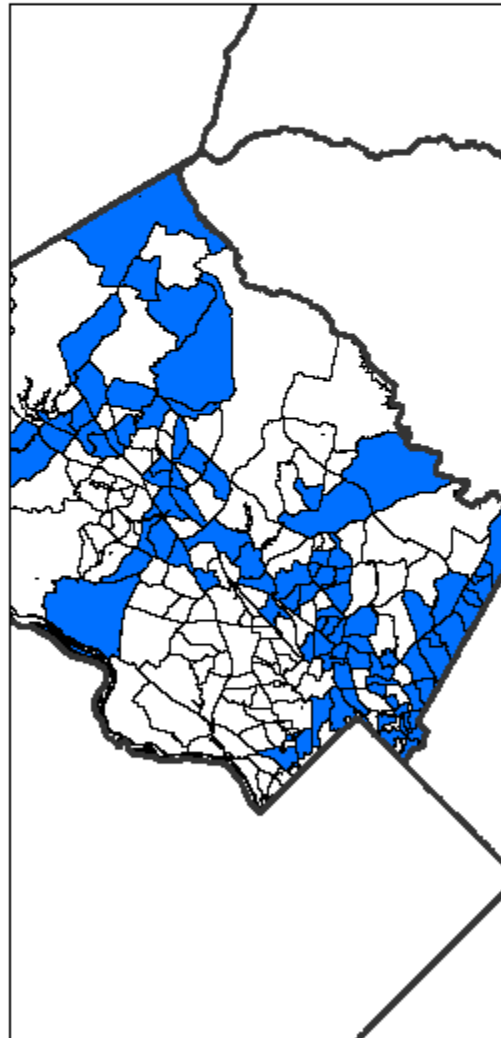
Maryland Department of Labor, Licensing & Regulation - Office of Workforce Information and Performance

Montgomery WIA

PY 2014
135 Tracts



PY 2015
94 Tracts

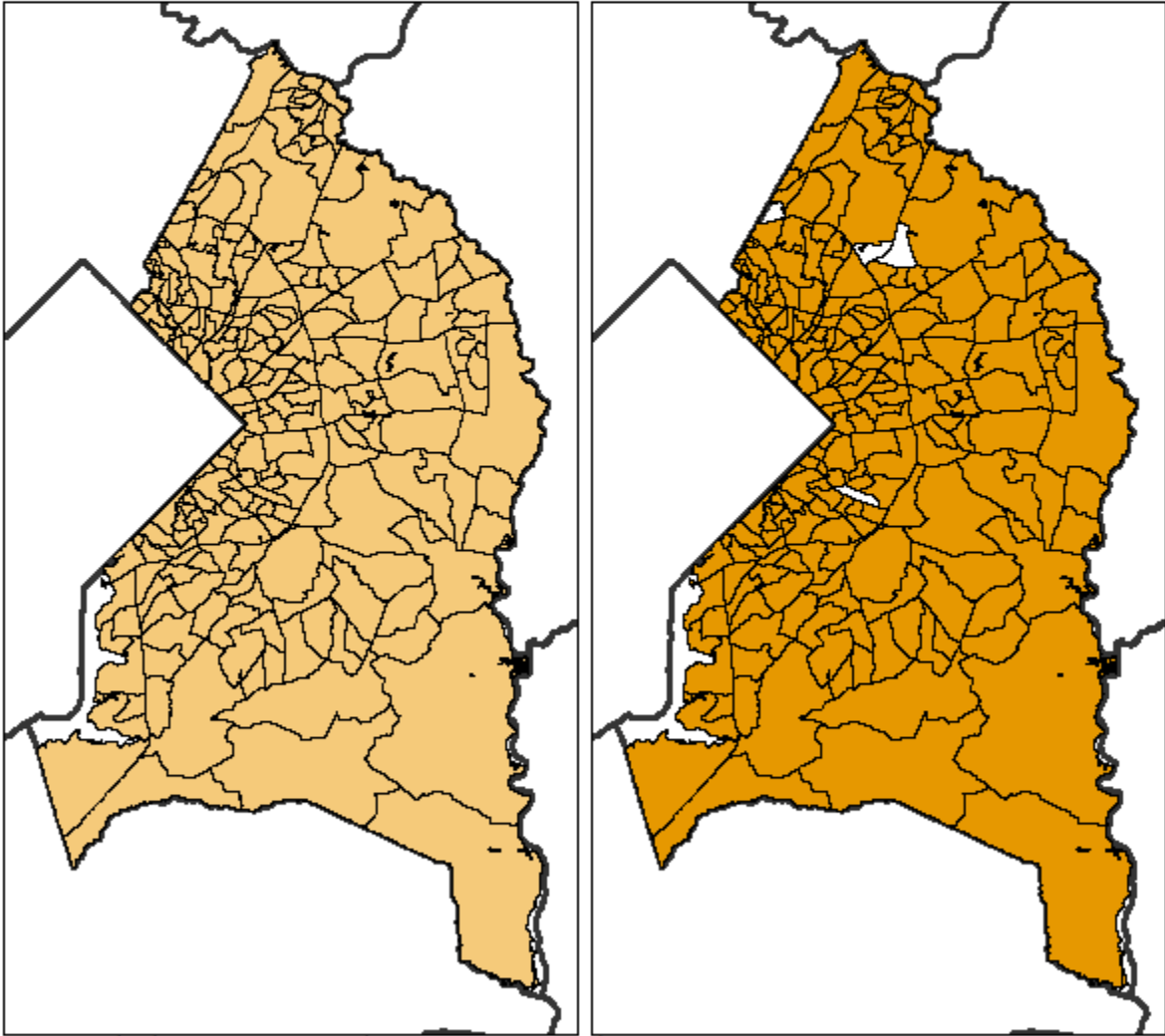


Maryland Department of Labor, Licensing & Regulation - Office of Workforce Information and Performance

Prince Georges WIA

PY 2014
218 Tracts (All In)

PY 2015
214 Tracts

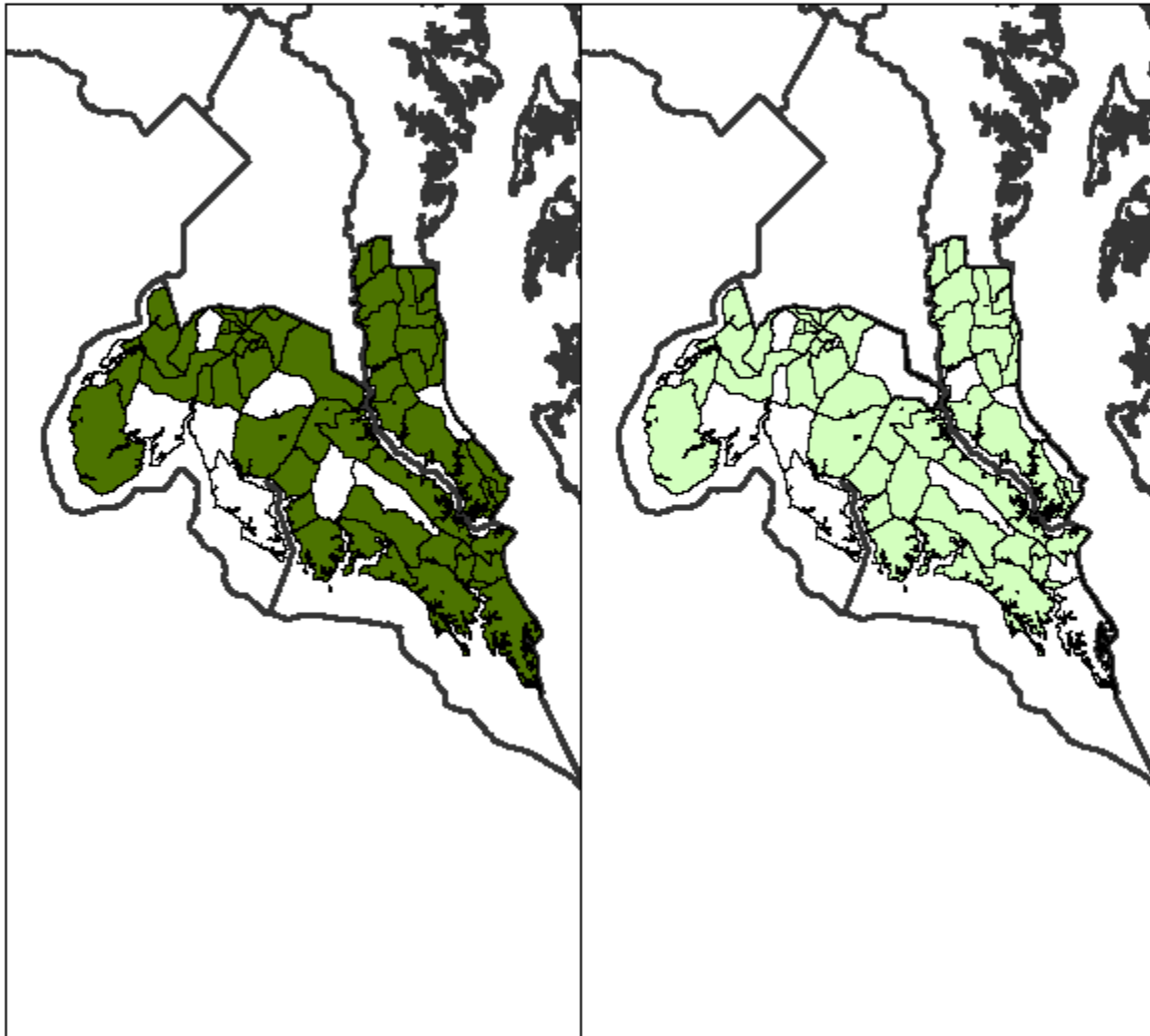


Maryland Department of Labor, Licensing & Regulation - Office of Workforce Information and Performance

Southern Maryland WIA

PY 2014
58 Tracts

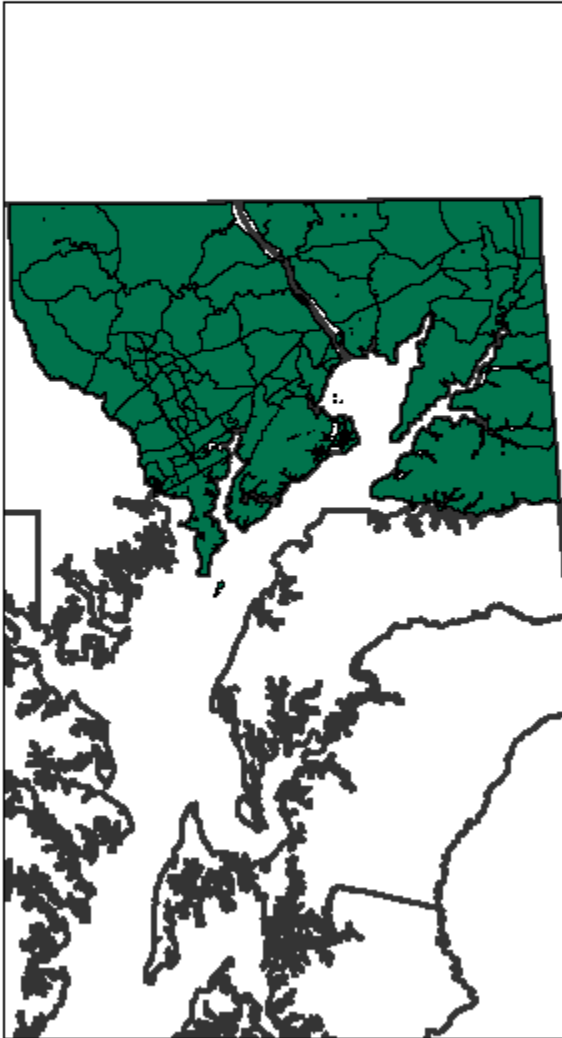
PY 2015
51 Tracts



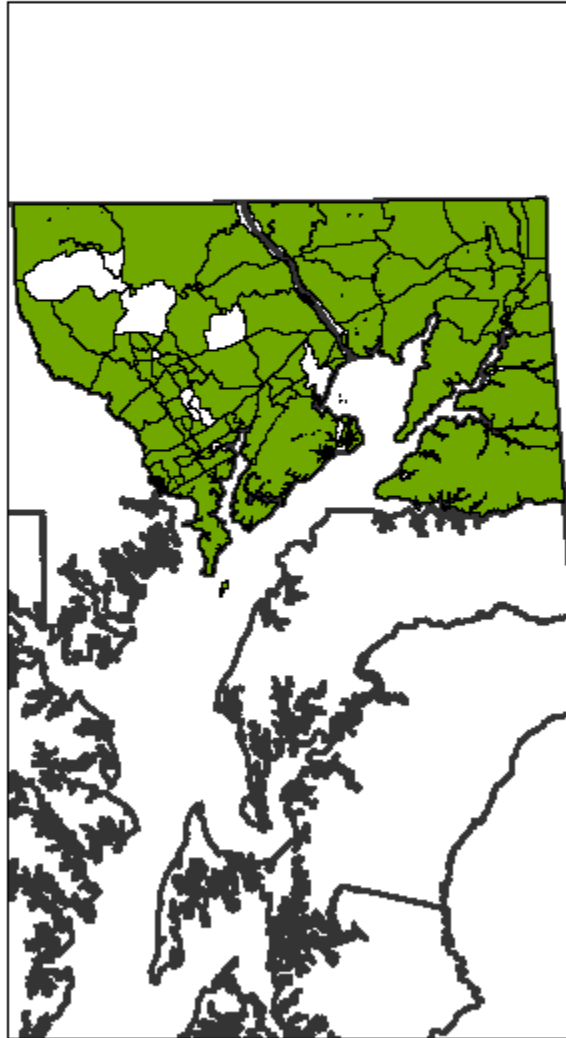
Maryland Department of Labor, Licensing & Regulation - Office of Workforce Information and Performance

Susquehanna WIA

PY 2014
76 Tracts (All In)



PY 2015
68 Tracts

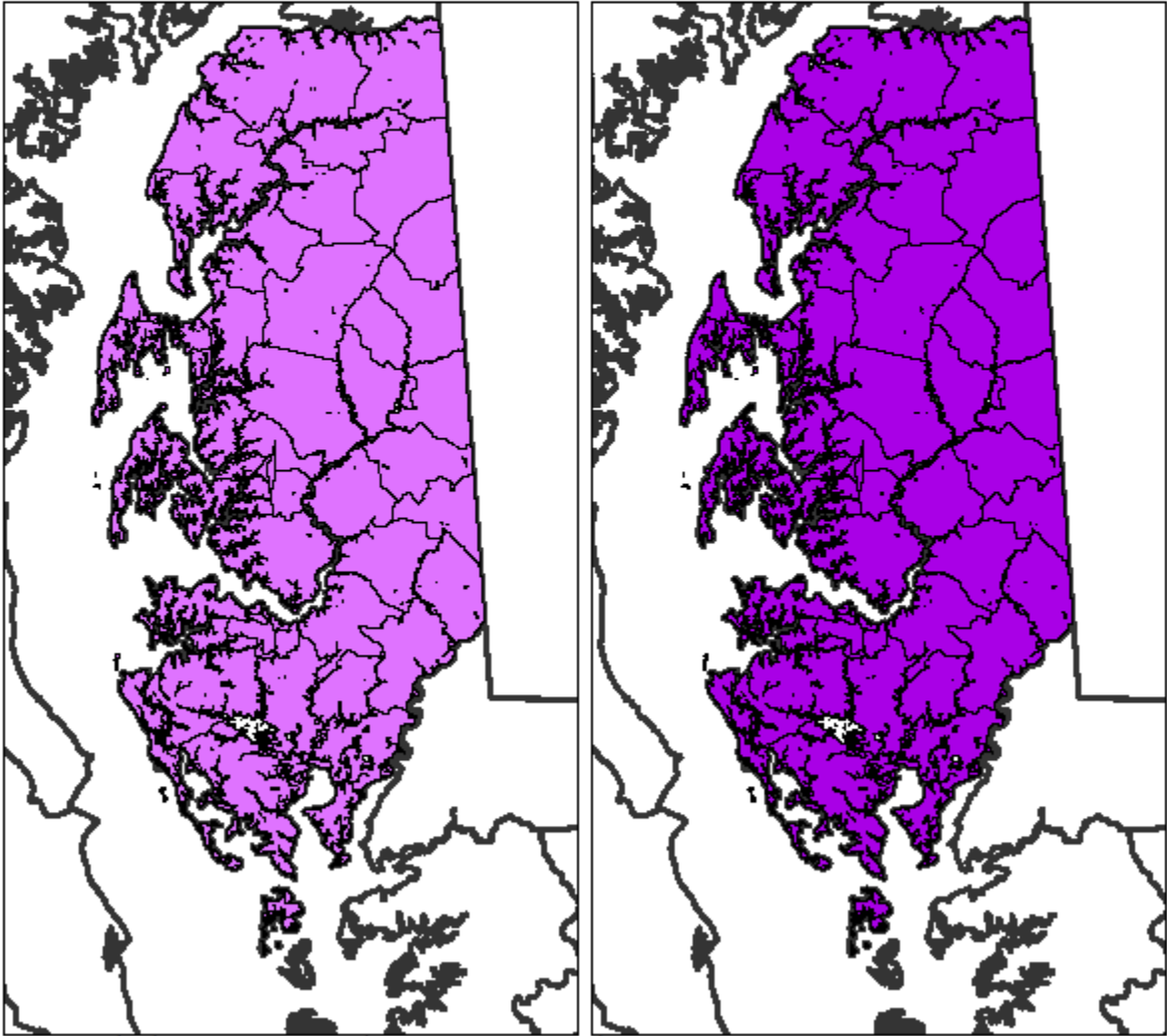


Maryland Department of Labor, Licensing & Regulation - Office of Workforce Information & Performance

Upper Shore WIA

PY 2014
50 Tracts (All In)

PY 2015
50 Tracts (All In)

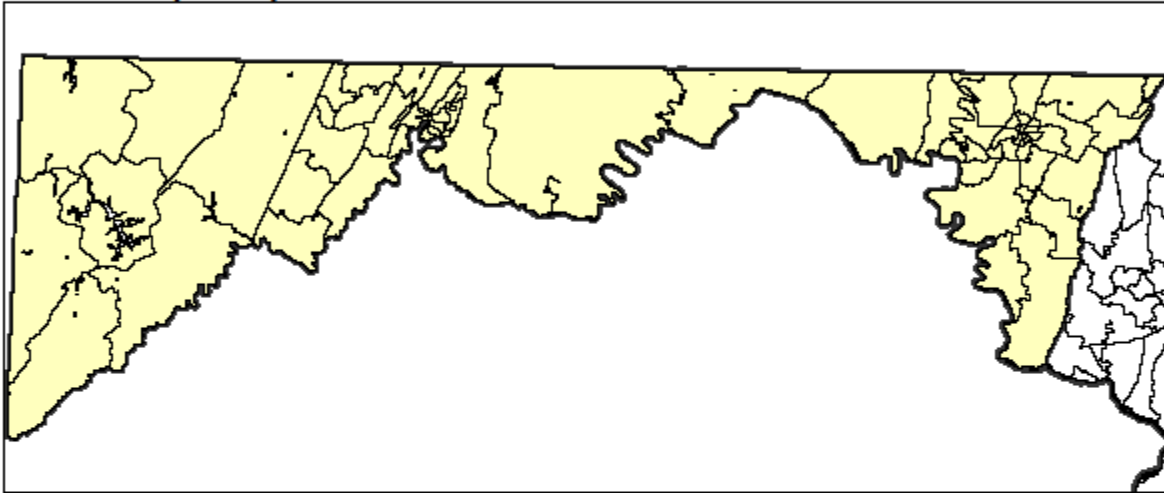


Maryland Department of Labor, Licensing & Regulation - Office of Workforce Information and Performance

Western Maryland WIA

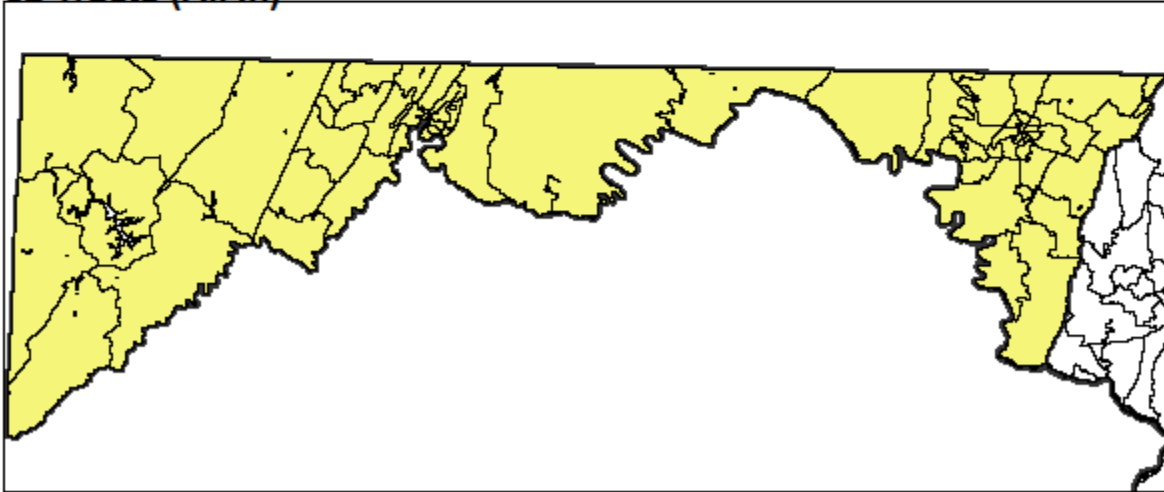
PY 2014

62 Tracts (All In)



PY 2015

62 Tracts (All In)



Maryland Department of Labor, Licensing & Regulation - Office of Workforce Information and Performance